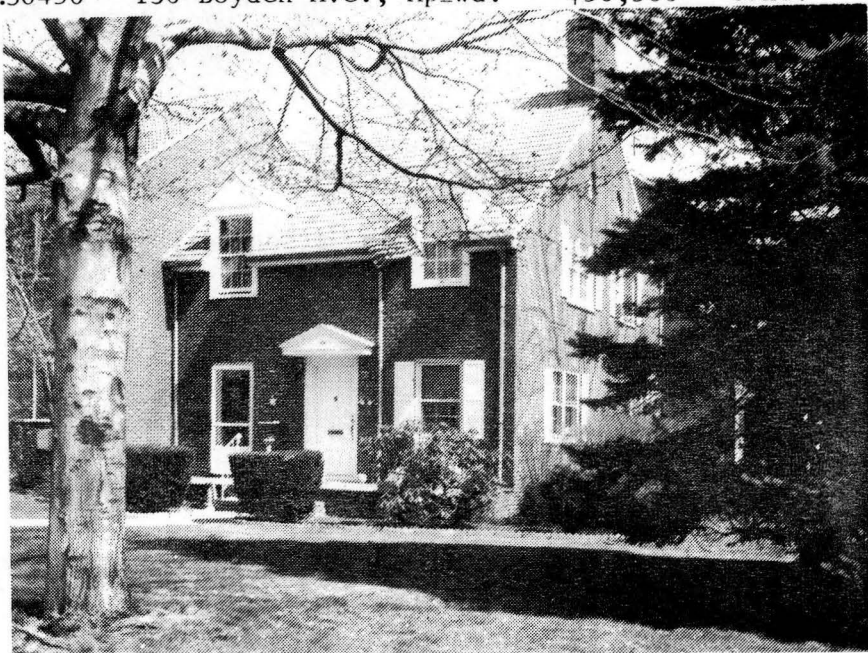


30456 136 Boyden Ave., Mplwd. \$56,500 <sup>2,000</sup> Cond.



30456 136 Boyden Ave., Mplwd. \$56,000 Cond.

Corner of Meadowbrook

Plt 28(44-3,2)

Condo, brk, slate rf, part ss/scrs, 30 amps.

1st-2-lr w/fp, kit, front patio.

2nd-1-br, bath w/s.o.t.

Attic-trap

Heating: Provided by association

No garage, parking space

L-1.9 B-9.7 '80 Rate \$8.52 Taxes \$988.32 Poss: 30

days o.a.a. Key w/L.R. MAPLEWOOD VILLAGE ASSOCIATION

HAS "RIGHT OF FIRST REFUSAL". Incl: parking space,

cptg. on stairs. Excl: shades & oven fan. Association

fees \$123.57 a month providing heat, exterior main-

tenance & disposal. Contract L.R. for further de-

tails. Seth Boyden GS, Mplwd. Jr., Columbia HS, Imm.

Heart Paro. Subject to errors & omissions.

LR:D&C 763-2410 4002001/10002001 (CB 3 - \$45)

Owner: Charles F. Poppre, Prem., 762-1166

Condo. 136 Boyden Ave., Mplwd. 3-1-0 1 br. \$56,000.

#8155--4/27/81 Price reduced to \$52,000. ANXIOUS. MUST SELL

#8183--7/1/81 SOLD.

#8199--8/6/82 Sale comp. Selling price \$42,000 None